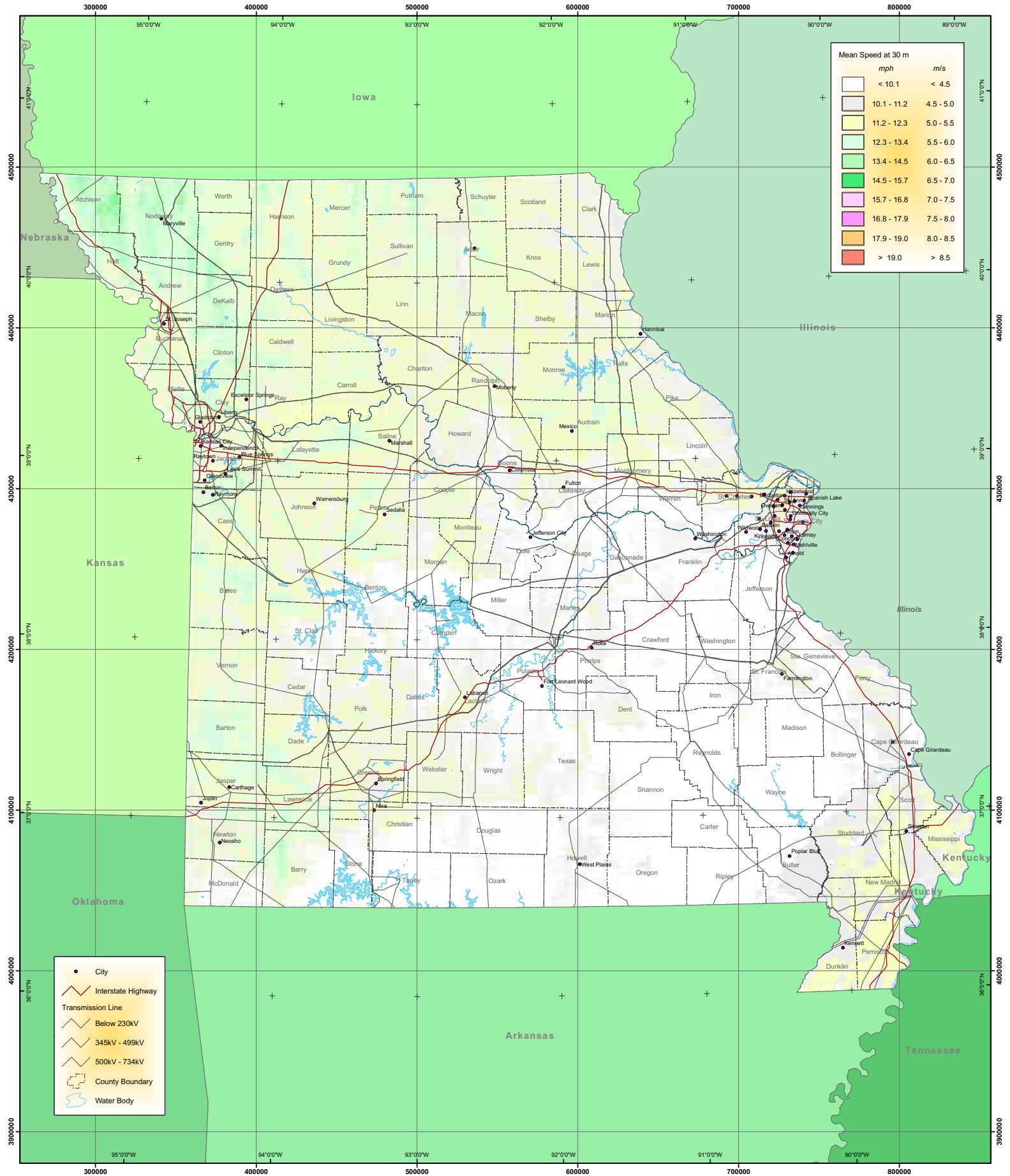


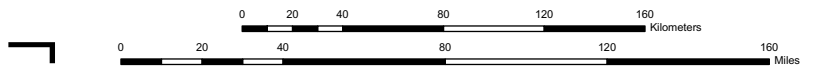
Mean Wind Speed of Missouri at 30 Meters

Final Wind Map



Projection: Transverse Mercator, Zone 15
 Spatial Resolution of Wind Resource Data: 200m
 This map was created by AWS Truewind using the MesoMap system and historical weather data. Although it is believed to represent an accurate overall picture of the wind energy resource, estimates at any location should be confirmed by measurement.

The transmission line information was obtained by AWS Truewind from the Platts POWERmap Transmission Line Layer. AWS does not warrant the accuracy of the transmission line information.
 Source: POWERmap, powermap.platts.com
 ©2004 Platts, A Division of The McGraw-Hill Companies



Prepared for the Missouri Department of Natural Resources with financial assistance from U.S. DOE's Wind Powering America program.

